

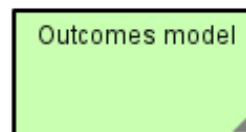
Crop Improvement Rural Development Project Outcomes Model

This is an outcomes model for an Crop Improvement Rural Development Project has been modeled in DoView Outcomes Software and drawn according to the Easy Outcomes Model Guidelines. ● www.DoView.com
● www.EasyOutcomes.org/guidelines/outcomesguidelines.html

Creative Commons Copyright: You are free to use this model for most commercial and non-commercial uses as long as you include the acknowledgement below. Further information on you how can use this model is available at www.outcomesmodels.org.

How to acknowledge this model if you use or amend it: 1) Please include the acknowledgment slice at the end of your version of the model; and 2) Please include the following acknowledgment on the front slice: Building this model has drawn on the Crop Improvement Rural Development Project Outcomes Model V1-0 modeled in DoView Outcomes Software (available at www.outcomesmodels.org).

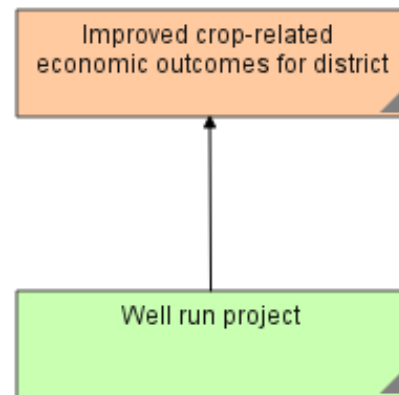
cropimprovement25.doview



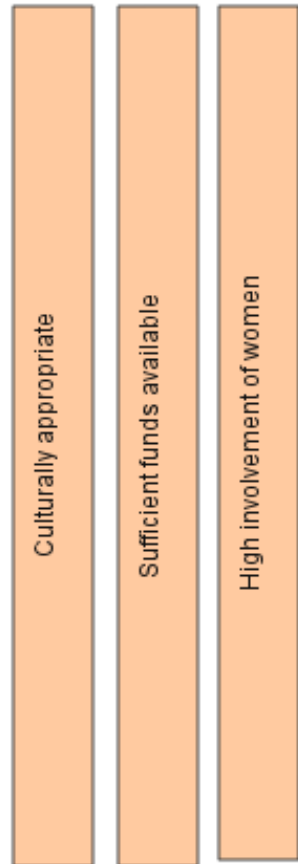
Click on triangle

Crop Improvement Rural Development Project V1-2

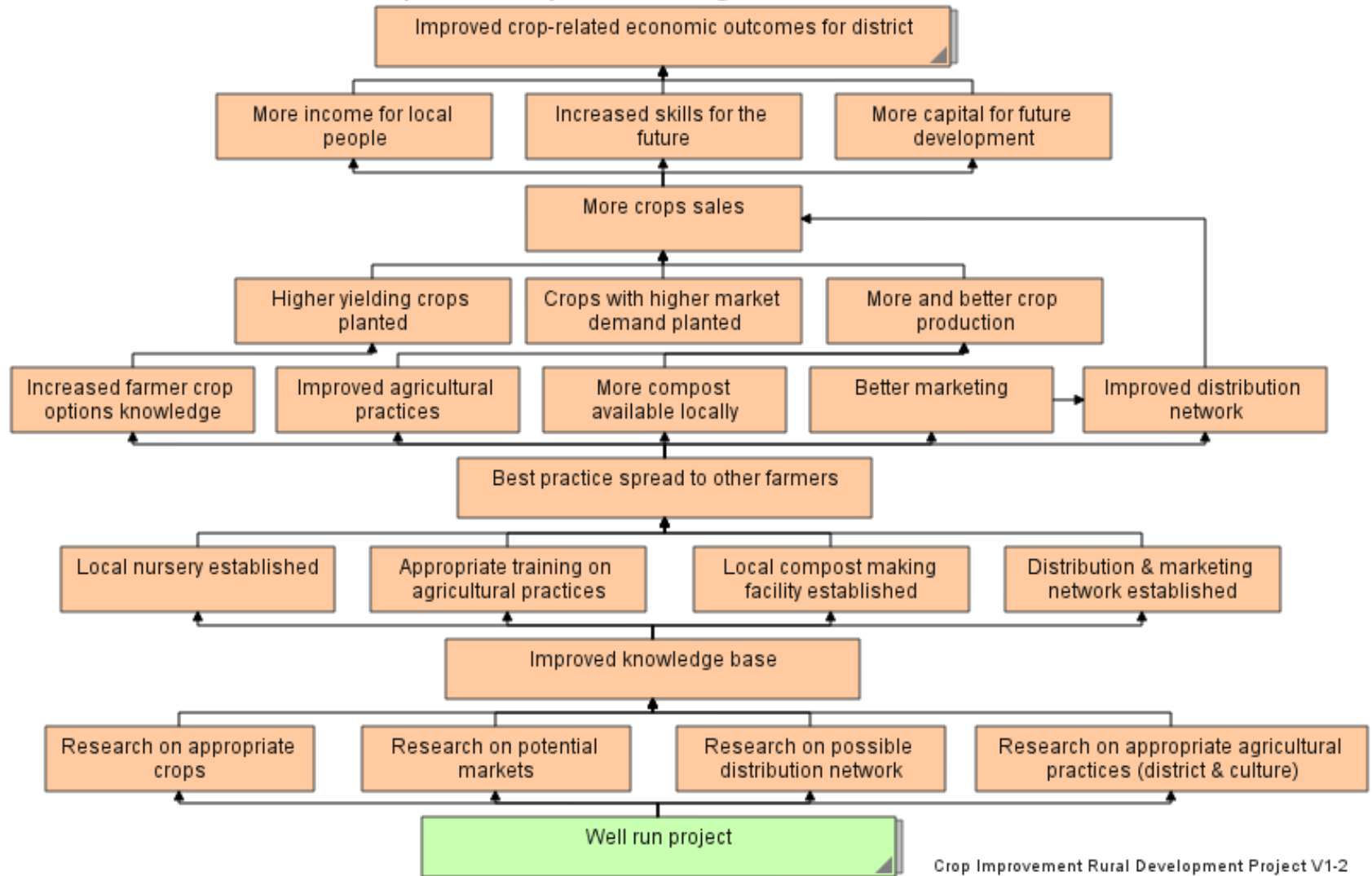
Crop improvement rural development project overview



High-level outcomes at top



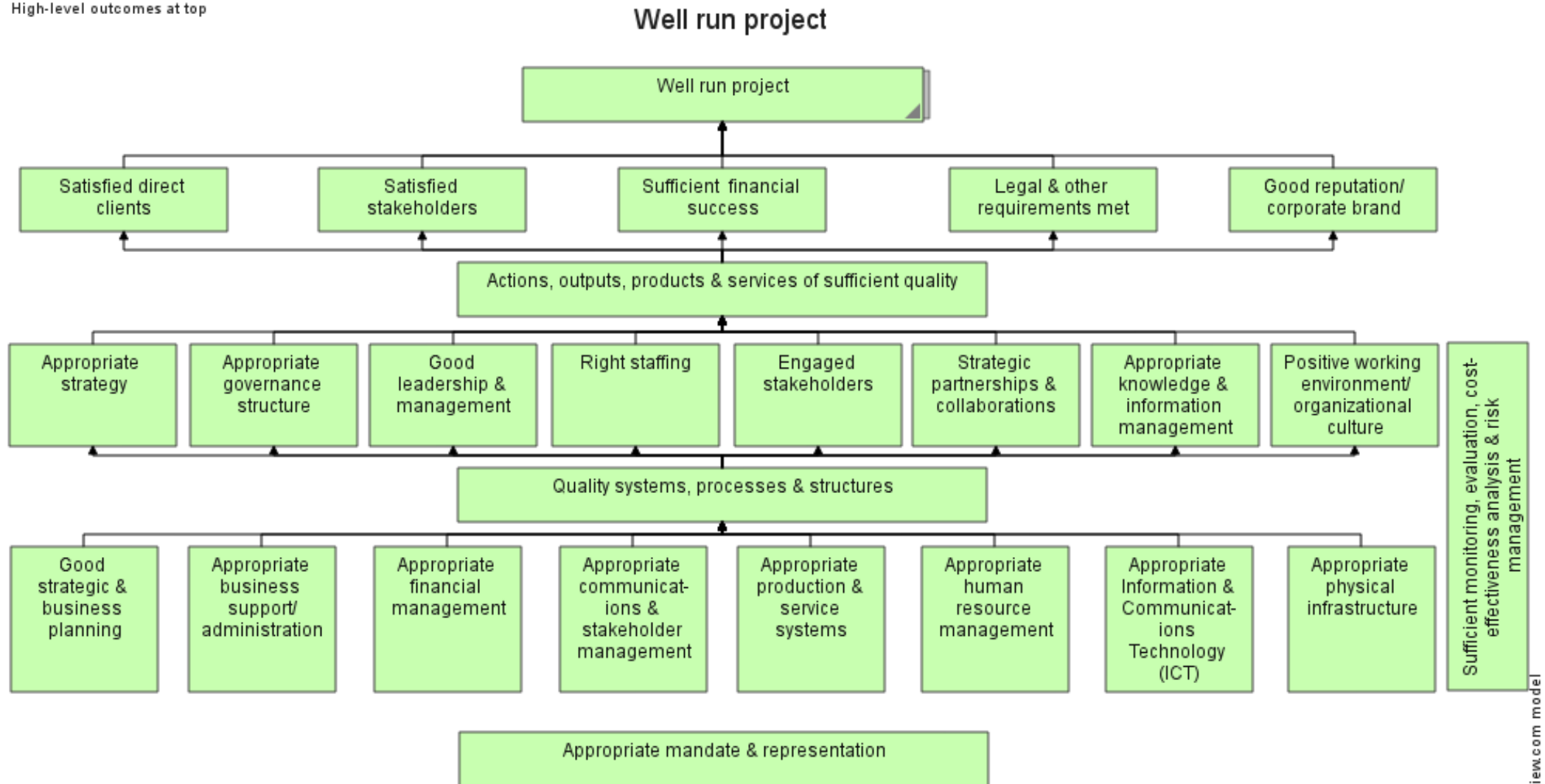
Improved crops, marketing and distribution



Crop Improvement Rural Development Project V1-2

doview.com model

High-level outcomes at top



Crop Improvement Rural Development Project V1-2

doview.com model

Acknowledgments

This Improved Crop District Development Project Outcomes Model was built by Dr Paul Duignan.

If amending this model to build a new model, please include this page in the model and a summary acknowledgment as follows: The building of this model has drawn on the Crop Improvement Rural Development Project Outcomes Model V1-0 modeled in DoView Outcomes Software (available from www.outcomesmodels.org).

Standard Disclaimer

Outcomesmodels.org and those associated with it make no explicit or implicit claim that this model is complete and are not liable in any way whatsoever for the way in which others use this model.