

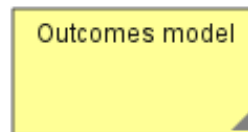
# Education System Outcomes Model for Self and External Evaluation

This model was prepared during the European Evaluation Society Conference, Lisbon, October 2008 by Dr Paul Duignan and colleagues. It was significantly further developed by Dr Paul Duignan following the conference.

This model is covered by a Creative Commons Copyright: You are free to use this model for most commercial and non-commercial uses as long as you include the acknowledgement below. Further information on you how can use this model is available at [www.outcomesmodels.org](http://www.outcomesmodels.org). ● [www.OutcomesModels.org](http://www.OutcomesModels.org)

How to acknowledge this model if you use or amend it: 1) Please include the acknowledgment page at the end of your version of the model; and 2) Please include the following acknowledgment on the front slice: Building this model has drawn on the National School Self and External Evaluation Outcomes Model (Model # 28) modeled in DoView Outcomes Software (available at [www.outcomesmodels.org](http://www.outcomesmodels.org)).

nationalschoolevaluationsystem28.doview



Click on triangle

National School Self and External Evaluation System (#28) V1-0

## Introduction to the model

This is an outcomes model for the development of a national school self evaluation and external evaluation system. It has been developed in accordance with the Easy Outcomes model guidelines. The model has been visualized in DoView outcomes and evaluation software.

● [www.DoView.com](http://www.DoView.com) ● [www.EasyOutcomes.org/guidelines/outcomesguidelines.html](http://www.EasyOutcomes.org/guidelines/outcomesguidelines.html)

This model shows a potential outcomes model for a national school self-evaluation and external evaluation system. The model is illustrative only and further work should be done on it if it is applied to a particular national setting. In addition examples are provided showing how indicators (Section 2) and evaluation questions (Section 3) can be mapped onto an outcomes model such as this.

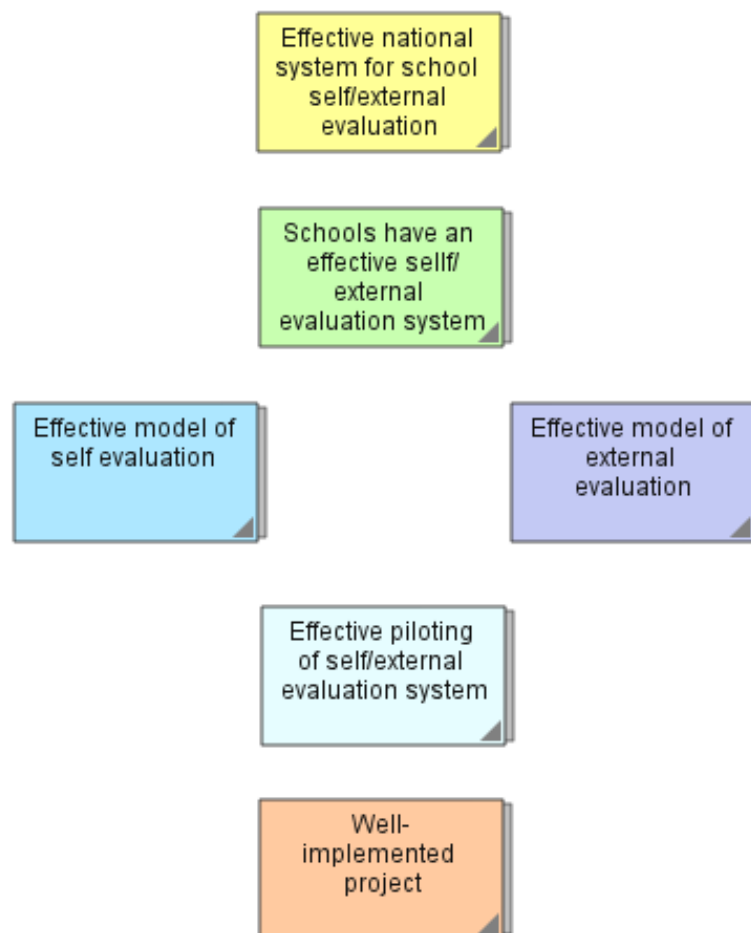
Further ideas for how this outcomes model could be developed into a comprehensive evaluation plan are provided in the example visual evaluation plan given below (Community Central evaluation plan).

● [www.OutcomesModels.org/models/communitycentral.html](http://www.OutcomesModels.org/models/communitycentral.html)

## Section 1: Outcomes Model

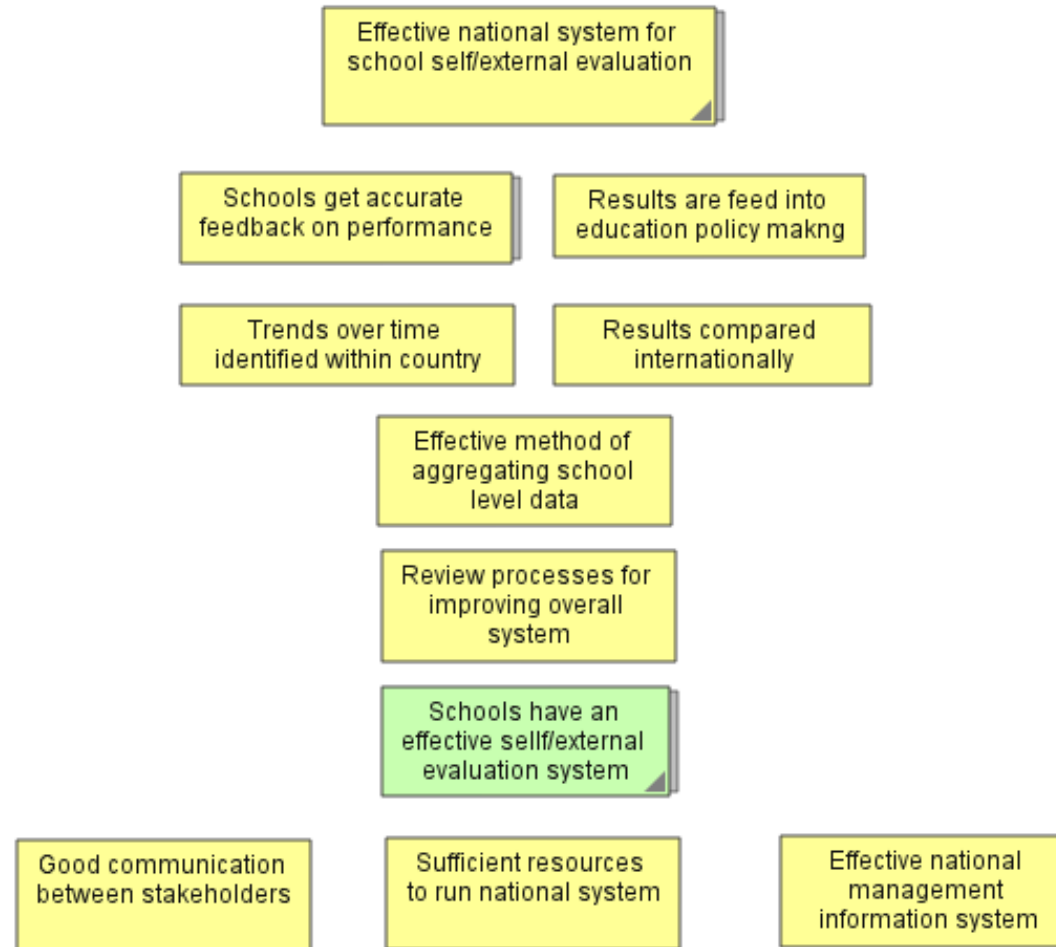
This section sets out the outcomes model. It should be noted that the model is illustrative only and would probably need more work if it was applied to a particular national context. This additional work could include modifying the current pages (slices) in the model and possibly developing new pages (slices) in the model.

## Overview of outcomes model for a national school self/external evaluation system



High level outcomes at top

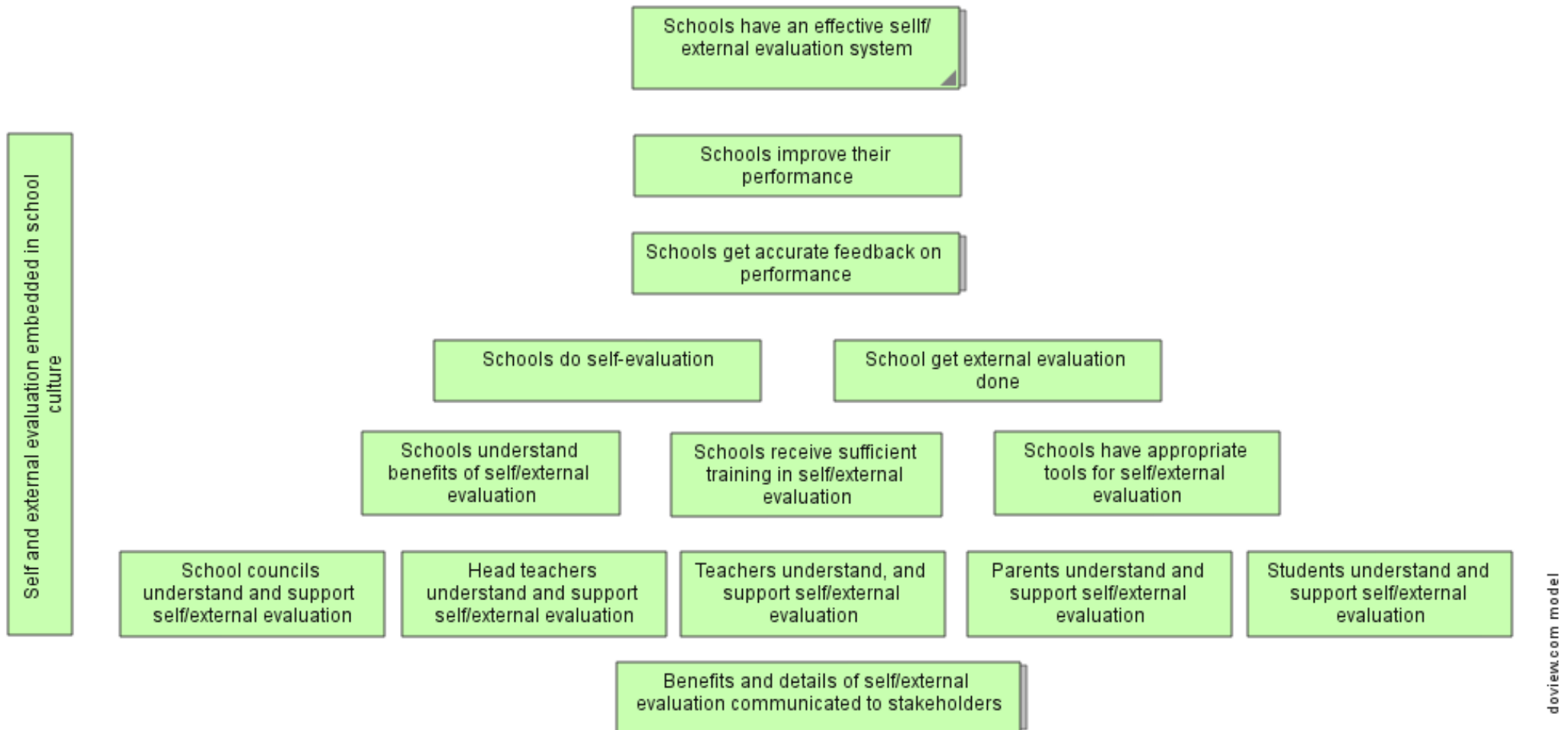
## Effective national self/external evaluation system



National School Self and External Evaluation System (#28) V1-0

High level outcomes at top

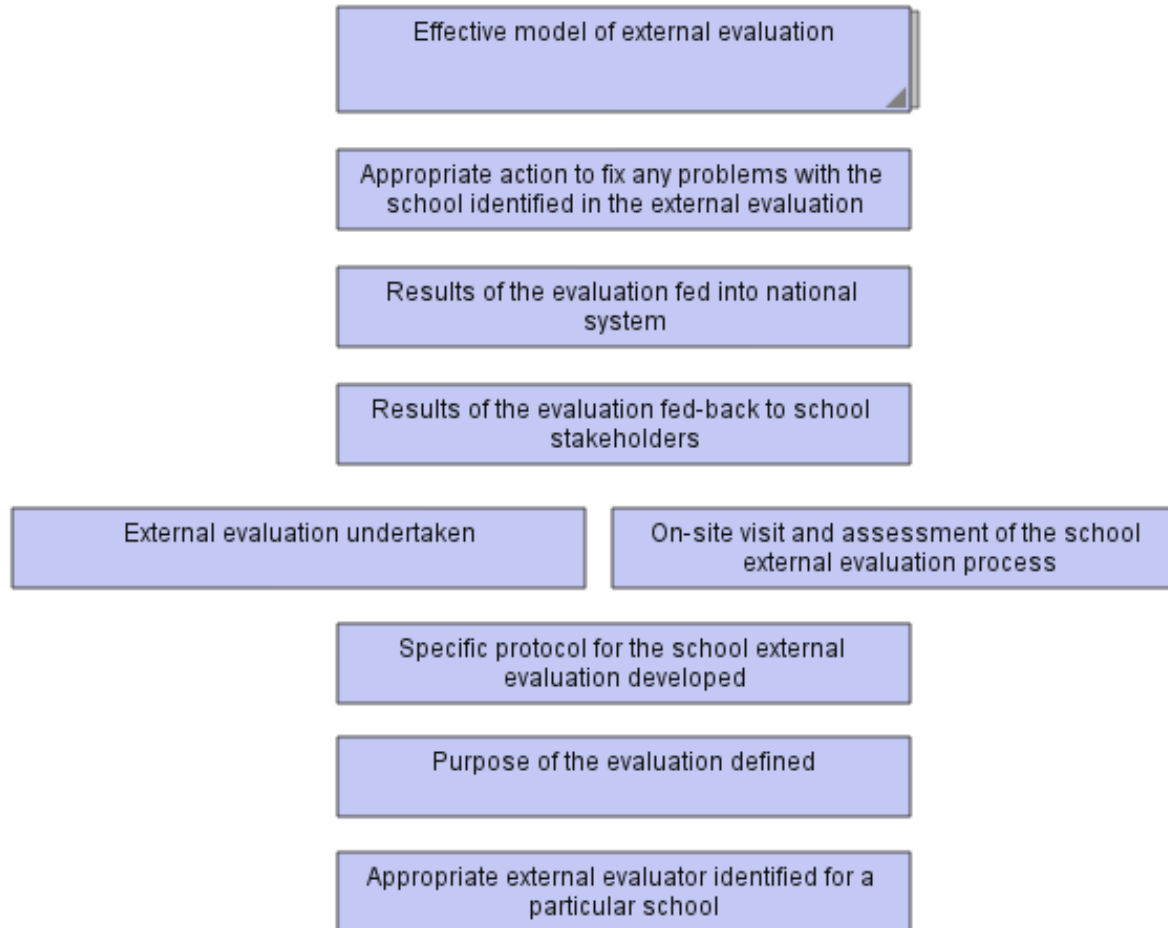
## Schools have an effective self/external evaluation system



National School Self and External Evaluation System (#28) V1-0

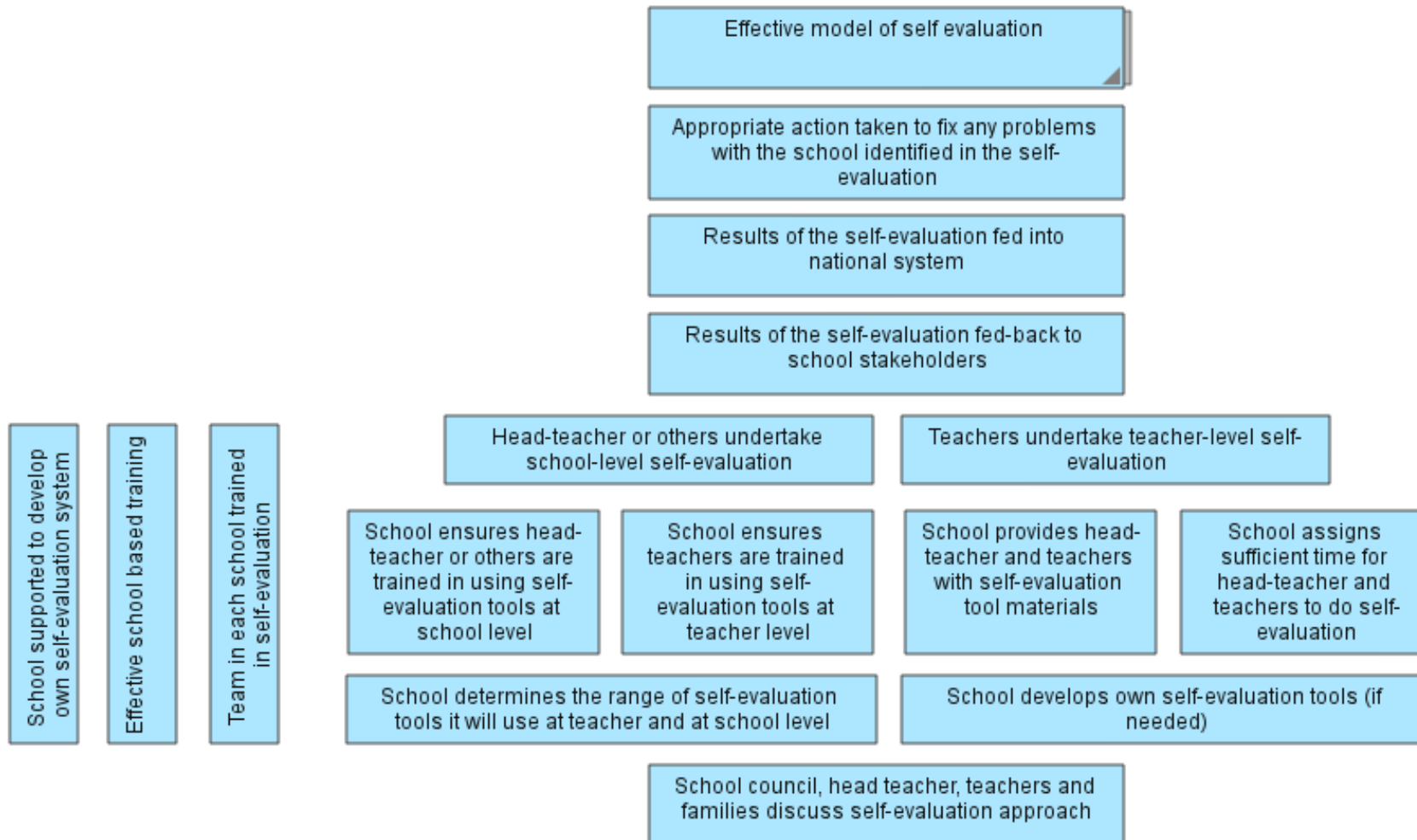
doview.com model

## Model of external evaluation



High level outcomes at top

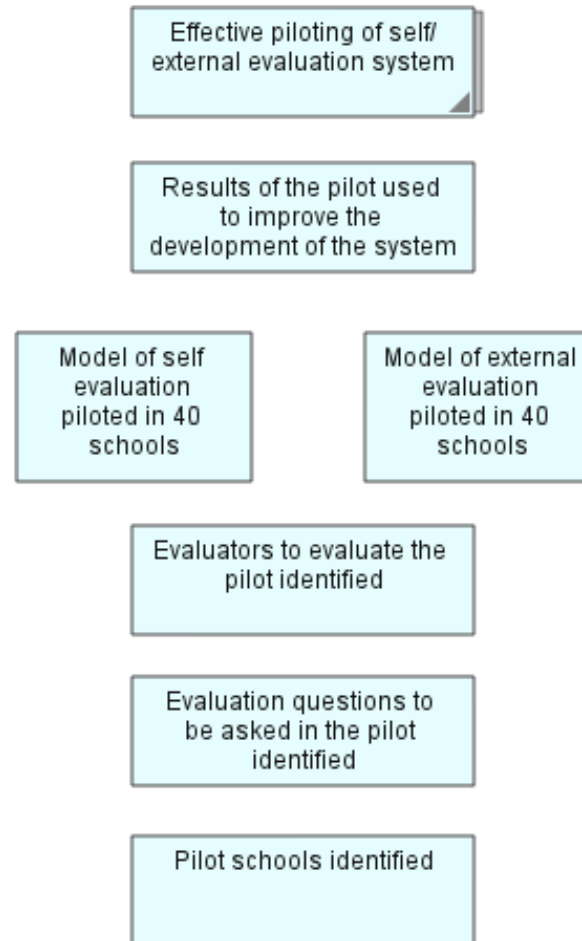
## Model of self-evaluation



National School Self and External Evaluation System (#28) V1-0

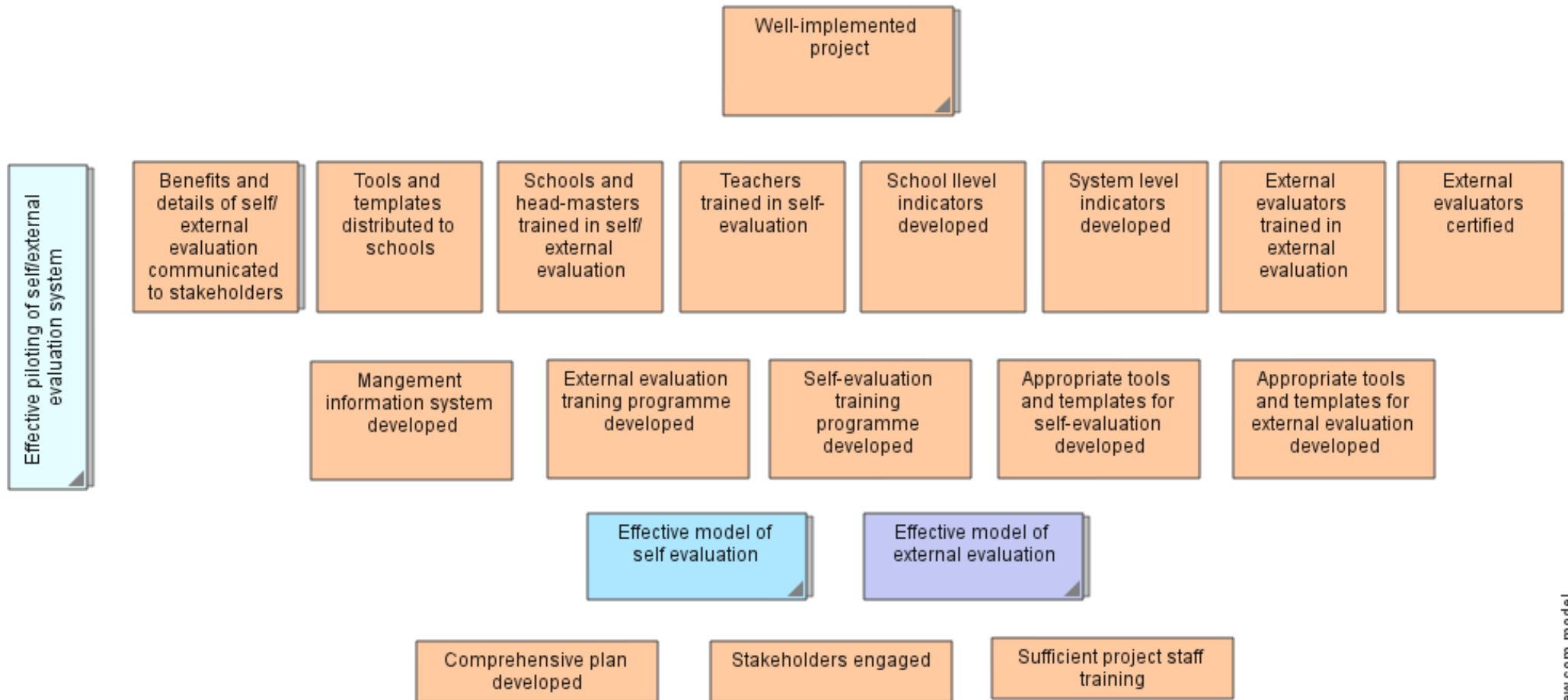
doview.com model

## Effective piloting of self/external evaluation system



High level outcomes at top

## Well implemented project



National School Self and External Evaluation System (#28) V1-0

doview.com model

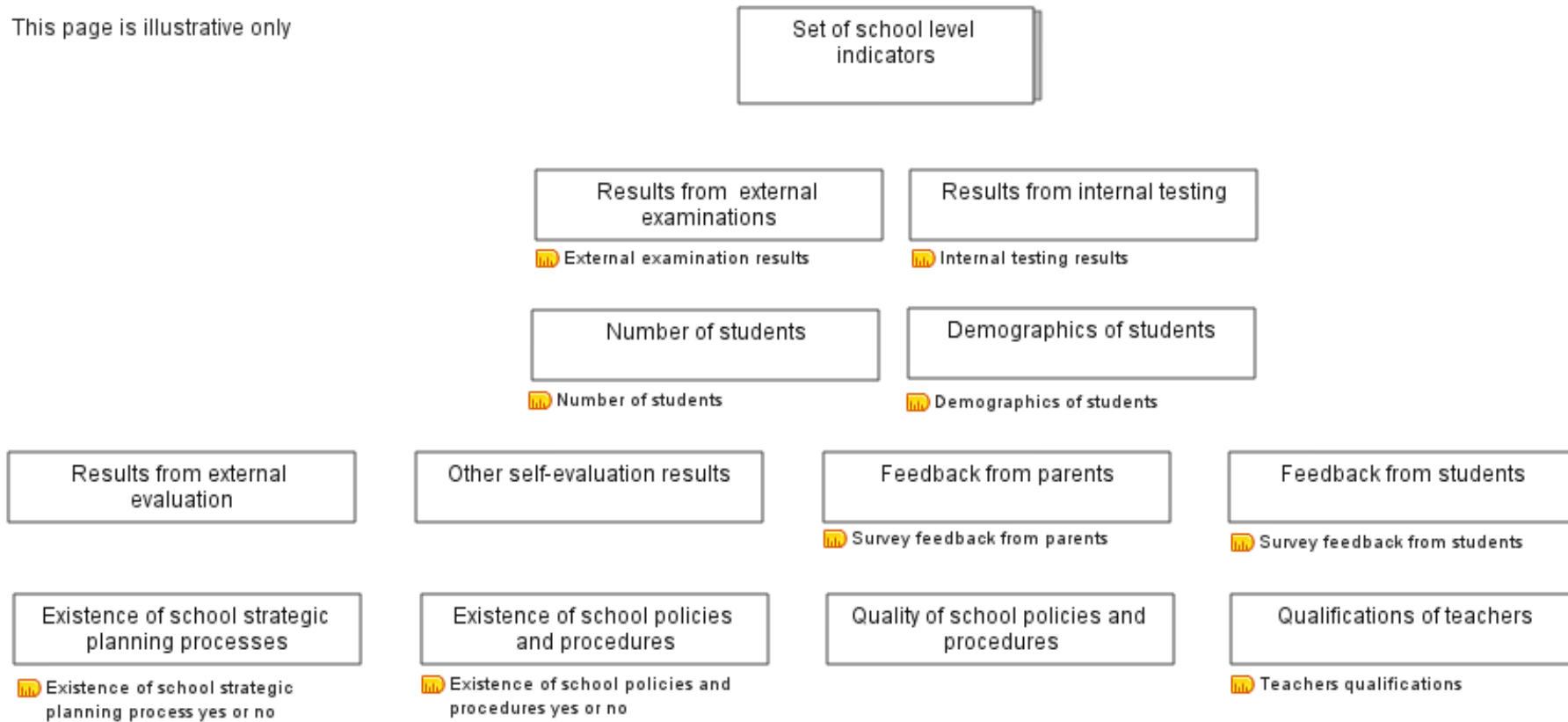
## Section Two: Indicators

This section shows how indicators could be mapped onto outcomes models. It is indicative only and needs further development for a particular national school system. The indicators for an individual school have been set out on a page and it is suggested that indicators at the system level could consist of aggregated indicators from the individual school level plus indicators mapped onto the other parts of the outcomes model as shown below.

The indicators given below are examples only and it is not a comprehensive list of indicators.

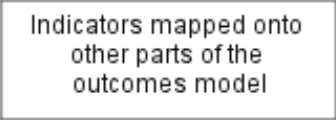
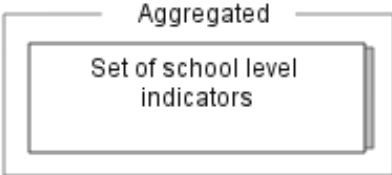
## School level indicators

This page is illustrative only

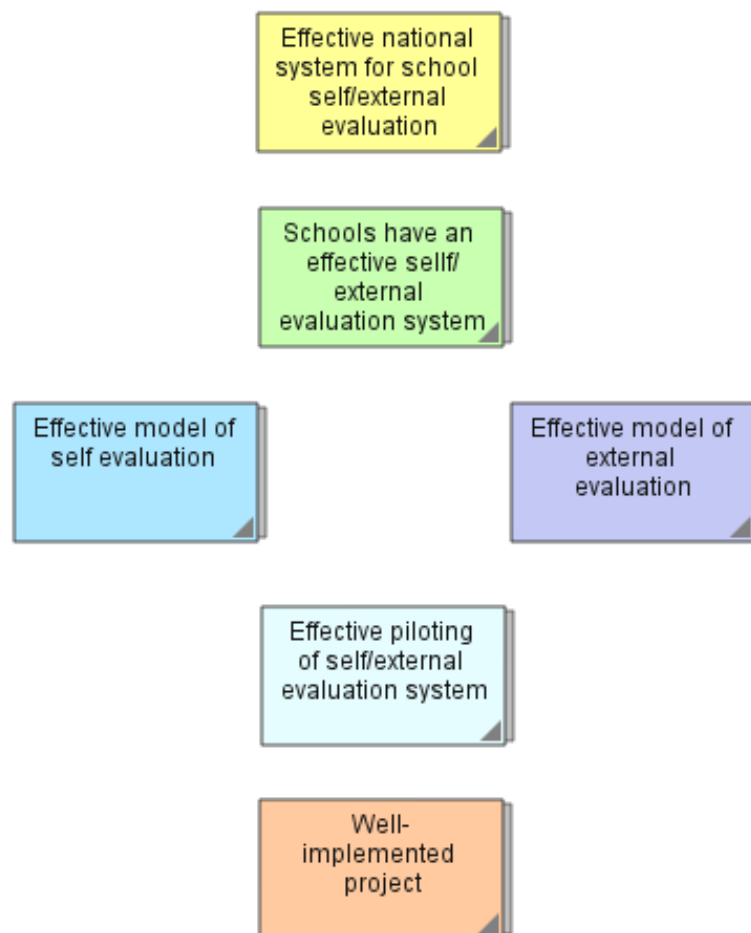


High level outcomes at top

### System level indicators



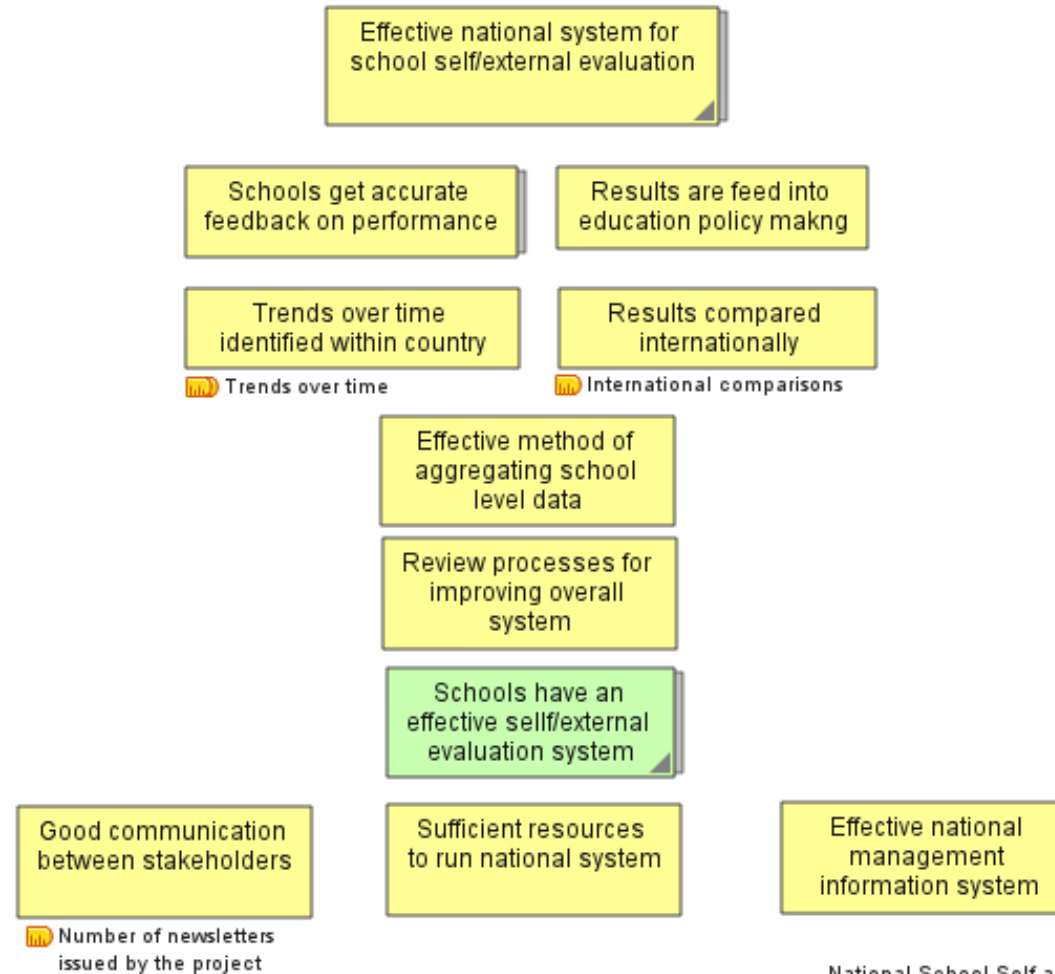
## Overview of outcomes model for a national school self/external evaluation system (I)



High level outcomes at top

## Effective national self/external evaluation system (I)

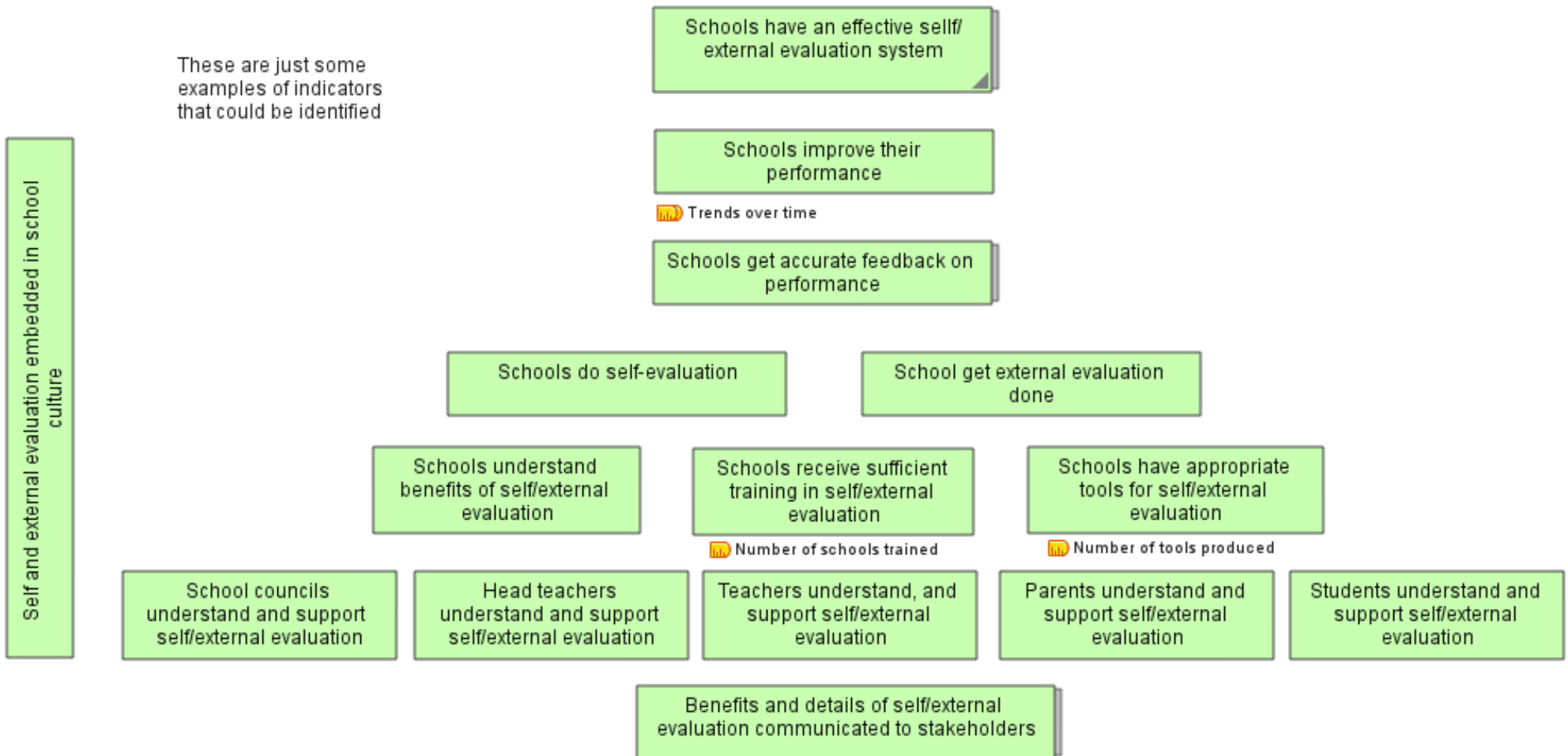
These are just some examples of indicators that could be identified



National School Self and External Evaluation System (#28) V1-0

High level outcomes at top

## Schools have an effective self/external evaluation system (I)



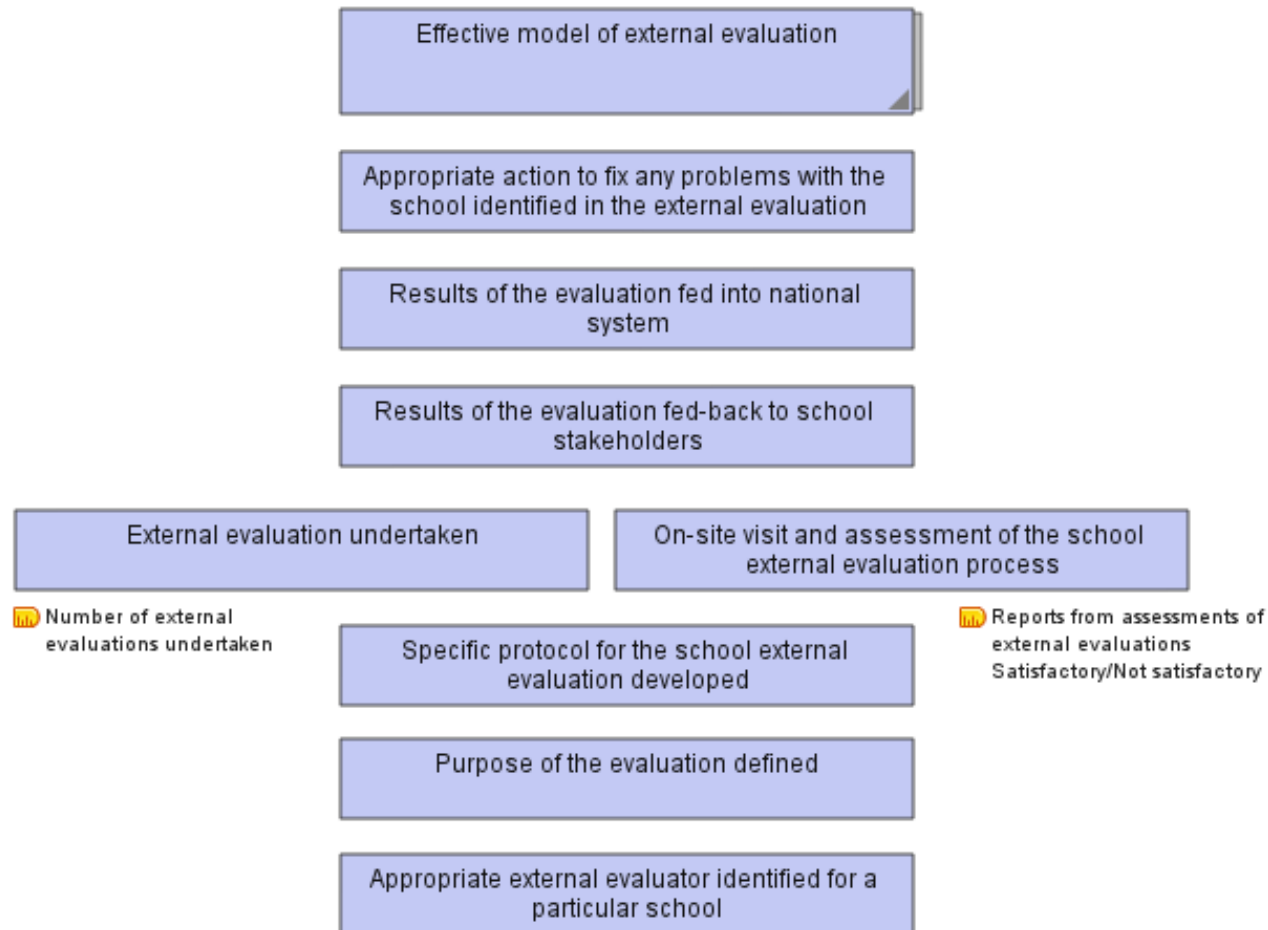
doview.com model

National School Self and External Evaluation System (#28) V1-0

High level outcomes at top

These are just some examples of indicators that could be identified

## Model of external evaluation (I)



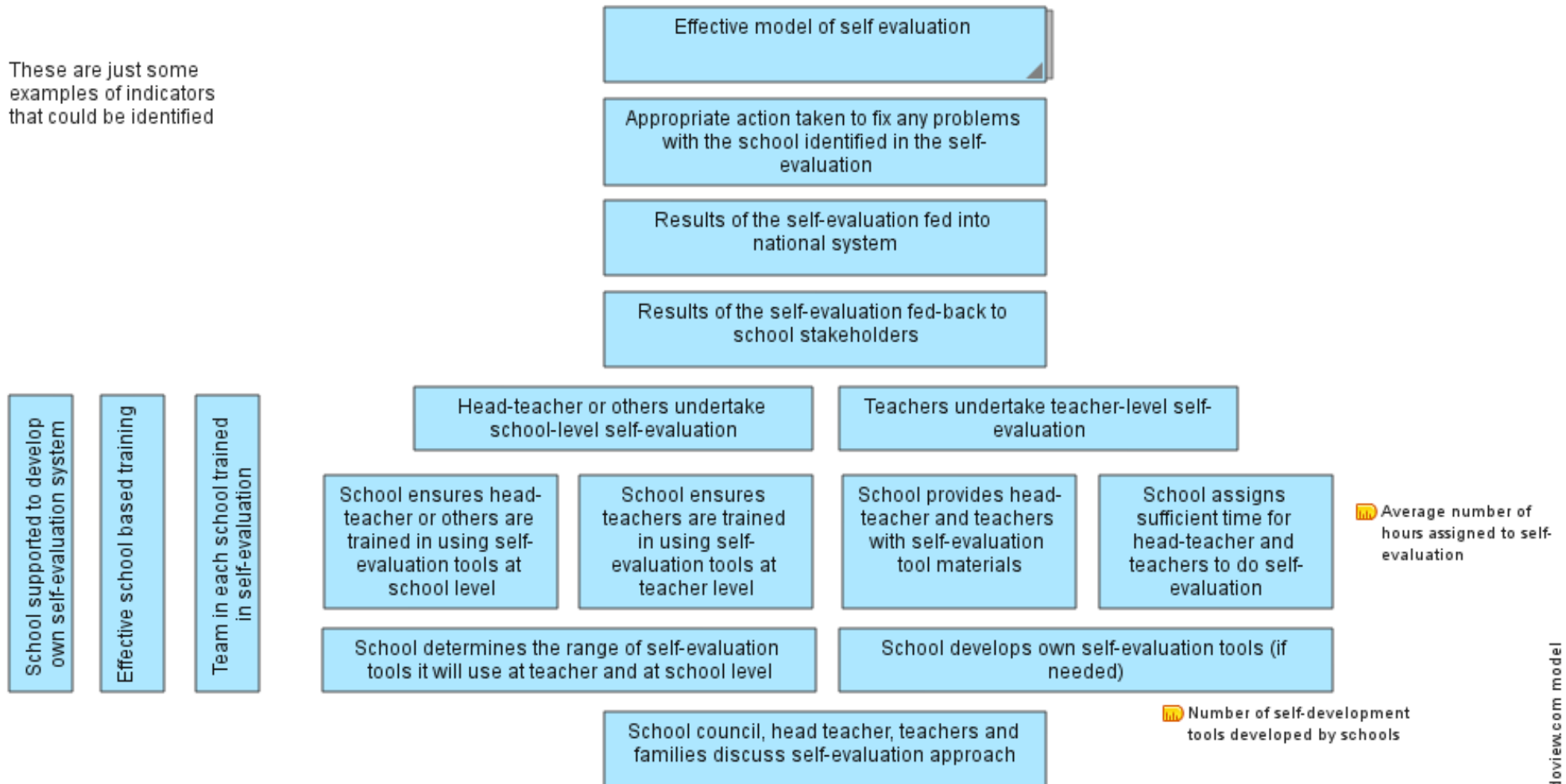
National School Self and External Evaluation System (#28) V1-0

doview.com model

High level outcomes at top

These are just some examples of indicators that could be identified

### Model of self-evaluation (I)



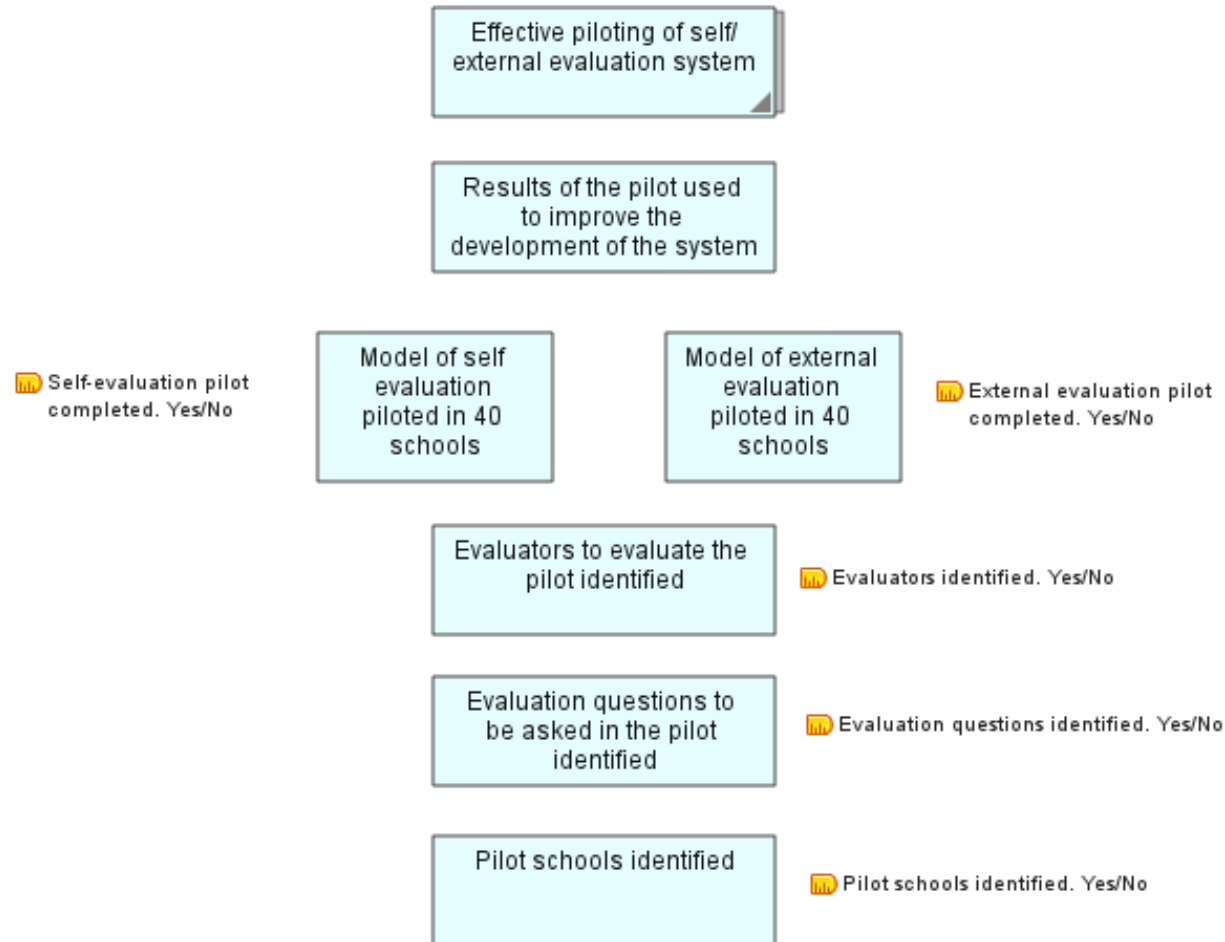
National School Self and External Evaluation System (#28) V1-0

doview.com model

High level outcomes at top

These are just some examples of indicators that could be identified

## Effective piloting of self/external evaluation system (I)



High level outcomes at top

## Well implemented project (I)

These are just some examples of indicators that could be identified

Well-implemented project

Effective piloting of self/external evaluation system

Benefits and details of self/external evaluation communicated to stakeholders

Tools and templates distributed to schools

Schools and head-masters trained in self/external evaluation

Teachers trained in self-evaluation

School level indicators developed

System level indicators developed

External evaluators trained in external evaluation

External evaluators certified

Management information system developed

External evaluation training programme developed

Self-evaluation training programme developed

Appropriate tools and templates for self-evaluation developed

Appropriate tools and templates for external evaluation developed

Management information system developed. Yes/No

External evaluation training programme developed

Self-evaluation training programme developed. Yes/No

Tools and templates developed for self-evaluation. Yes/No

Tools and templates for external evaluation developed. Yes/No

Effective model of self evaluation

Effective model of external evaluation

Comprehensive plan developed

Stakeholders engaged

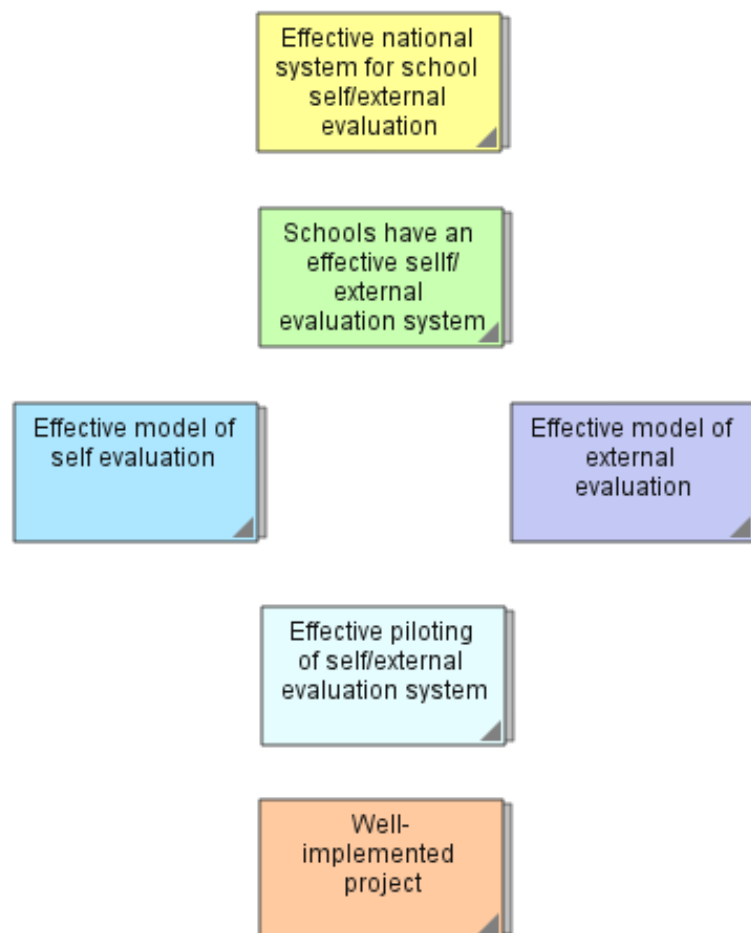
Sufficient project staff training

National School Self and External Evaluation System (#28) V1-0

doview.com model

## Section Three: Evaluation Questions

## Overview of outcomes model for a national school self/external evaluation system (EQ)

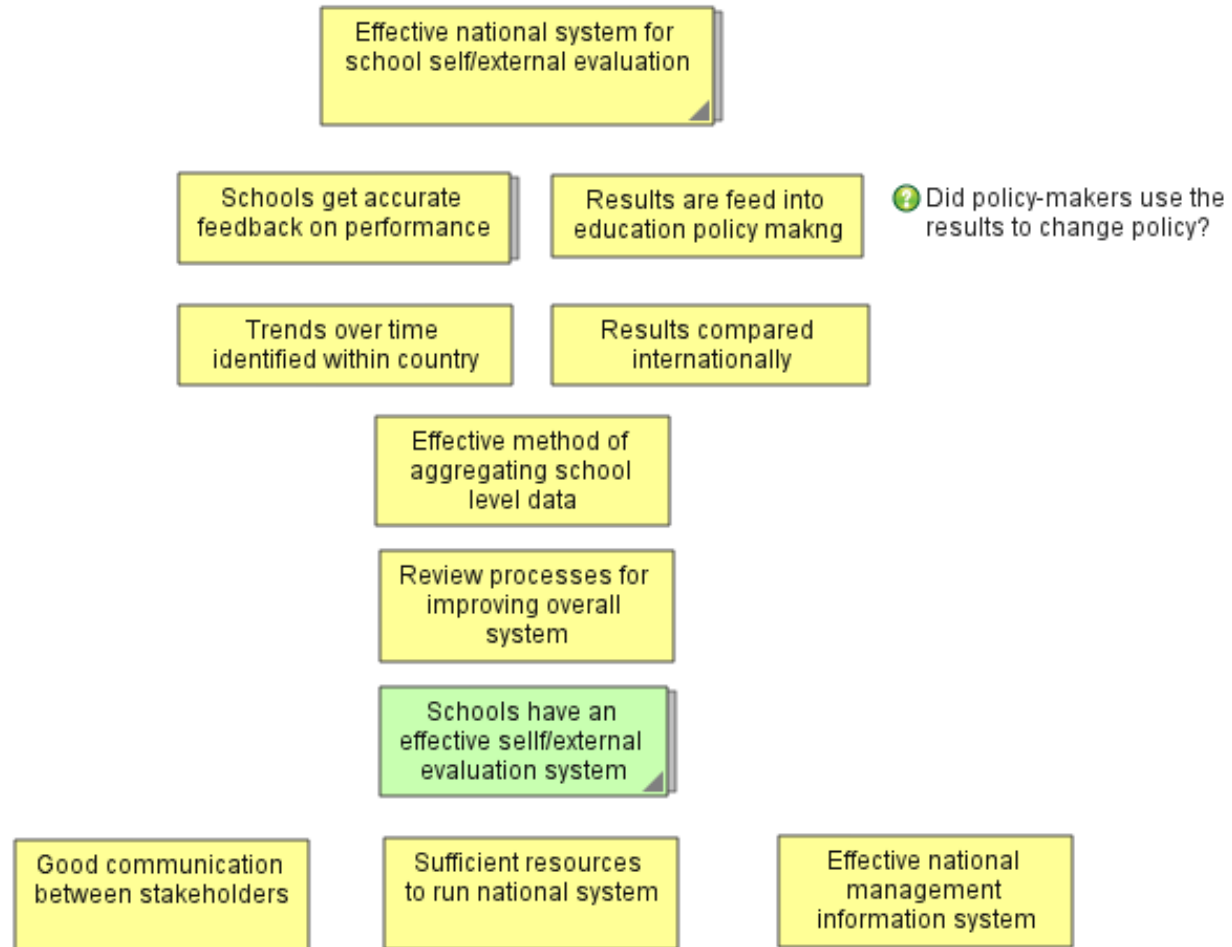


High level outcomes at top

## Effective national self/external evaluation system (EQ)

These are just some examples of evaluation questions that could be identified

Did stakeholders believe they received sufficient information about the system?

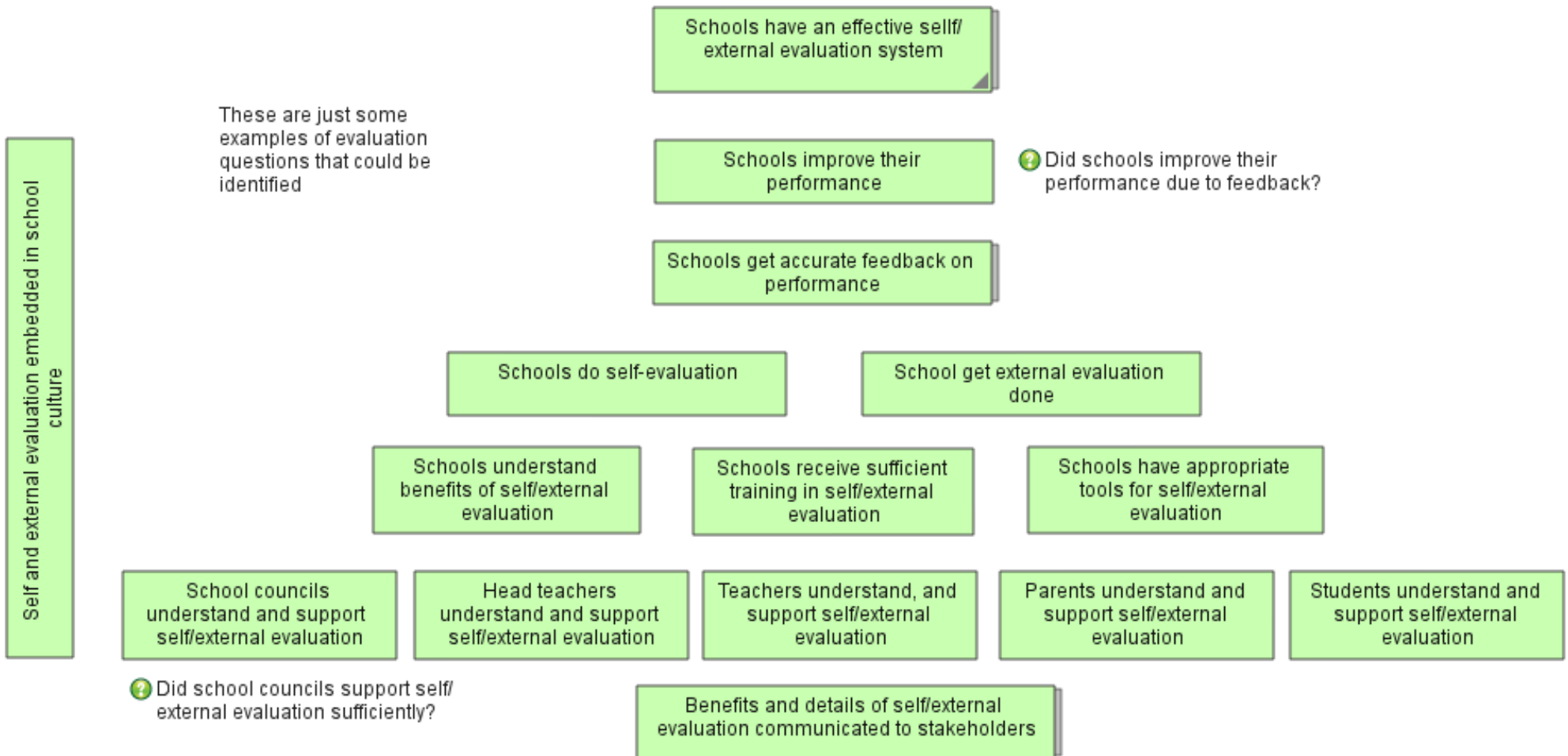


National School Self and External Evaluation System (#28) V1-0

doview.com model

High level outcomes at top

## Schools have an effective self/external evaluation system (EQ)



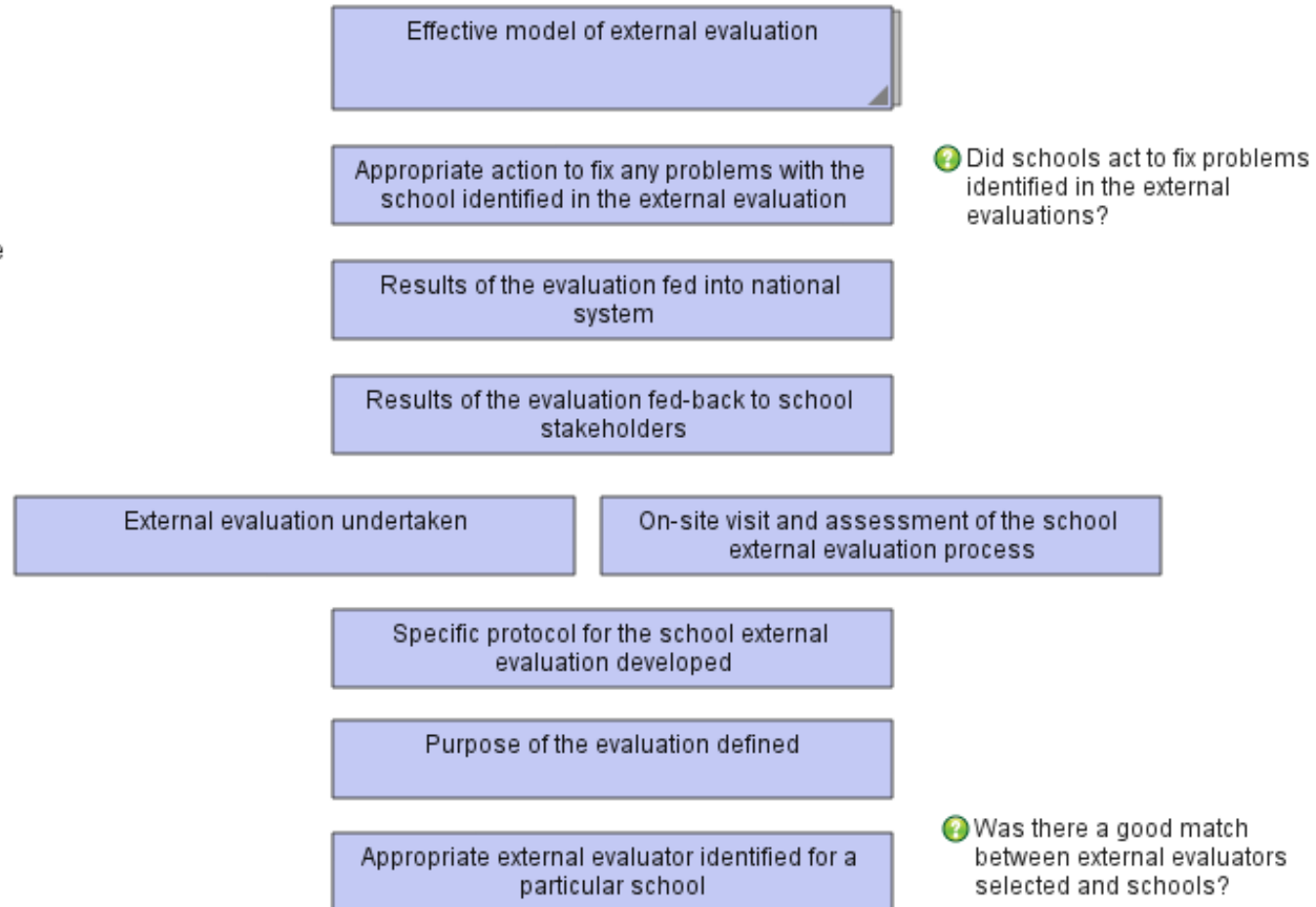
National School Self and External Evaluation System (#28) V1-0

doview.com model

High level outcomes at top

## Model of external evaluation (EQ)

These are just some examples of evaluation questions that could be identified



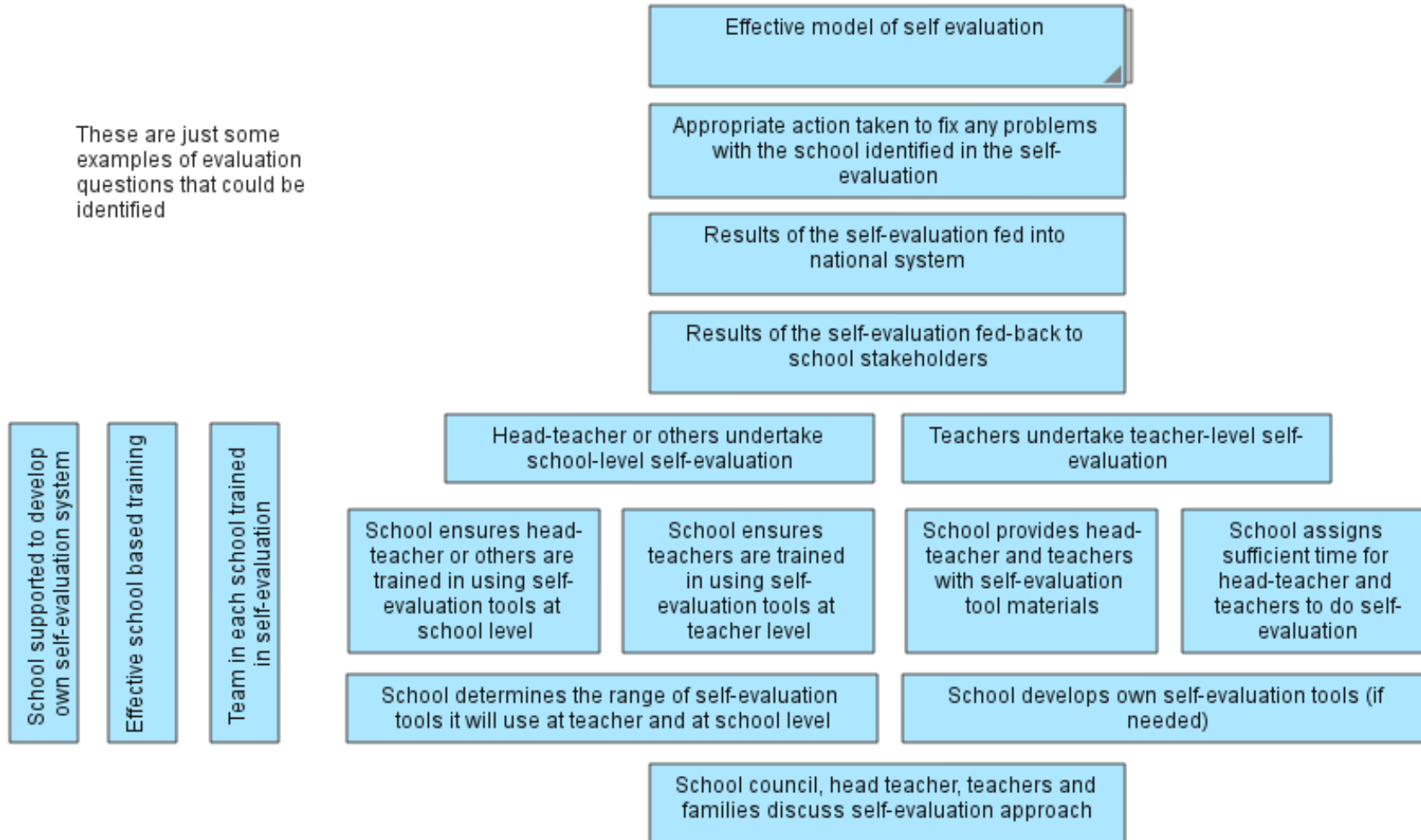
National School Self and External Evaluation System (#28) V1-0

doview.com model

High level outcomes at top

### Model of self-evaluation (EQ)

These are just some examples of evaluation questions that could be identified



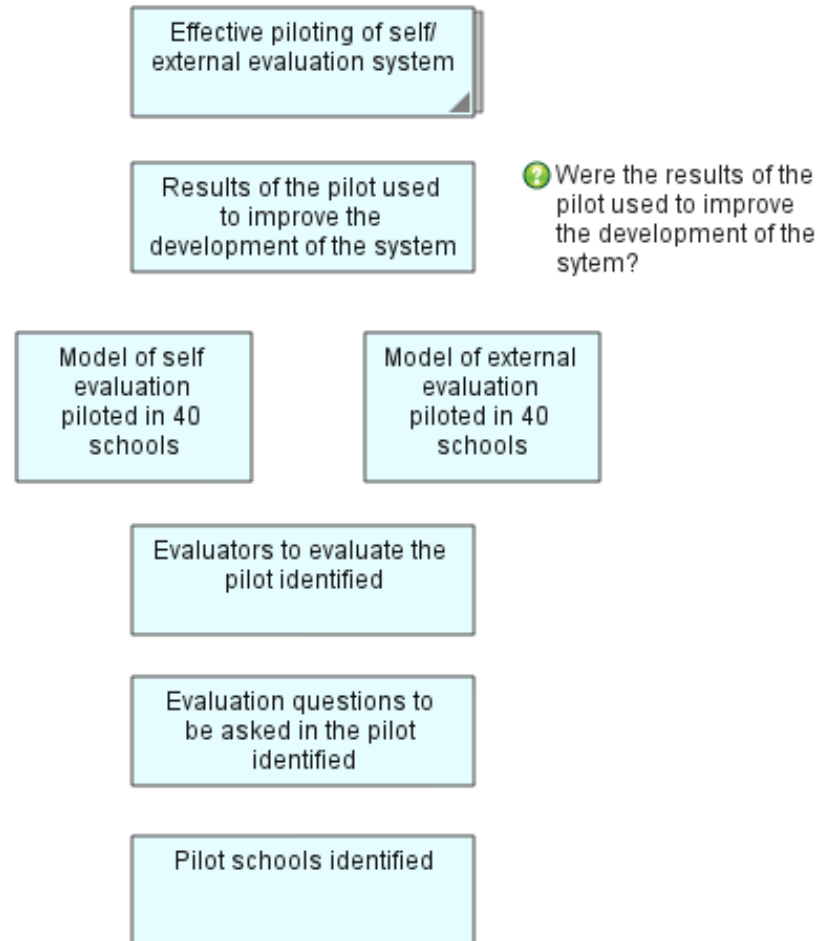
National School Self and External Evaluation System (#28) V1-0

doview.com model

High level outcomes at top

## Effective piloting of self/external evaluation system (EQ)

These are just some examples of evaluation questions that could be identified



High level outcomes at top

## Well implemented project (EQ)

These are just some examples of evaluation questions that could be identified

Well-implemented project

Effective piloting of self/external evaluation system

Benefits and details of self/external evaluation communicated to stakeholders

Tools and templates distributed to schools

Schools and head-masters trained in self/external evaluation

Teachers trained in self-evaluation

School level indicators developed

System level indicators developed

External evaluators trained in external evaluation

External evaluators certified

Was the training effective?

Management information system developed

External evaluation training programme developed

Self-evaluation training programme developed

Appropriate tools and templates for self-evaluation developed

Appropriate tools and templates for external evaluation developed

Were the tools and templates of sufficient quality?

Effective model of self evaluation

Effective model of external evaluation

Comprehensive plan developed

Stakeholders engaged

Sufficient project staff training

National School Self and External Evaluation System (#28) V1-0

doview.com model

# Acknowledgments

This National School Self and External Evaluation System Outcomes Model was prepared during the European Evaluation Society Conference, Lisbon, October 2008 by Dr Paul Duignan and colleagues. It was significantly further developed by Dr Paul Duignan after the conference.

If amending this model to build a new model, please include this page in the model and a summary acknowledgment as follows: The building of this model has drawn on the National School Self and External System Outcomes Model V1-0 (Model # 28) modeled in DoView Outcomes Software (available from [www.outcomesmodels.org](http://www.outcomesmodels.org)).

## Standard Disclaimer

Outcomesmodels.org and those associated with it make no explicit or implicit claim that this model is complete and are not liable in any way whatsoever for the way in which others use this model.